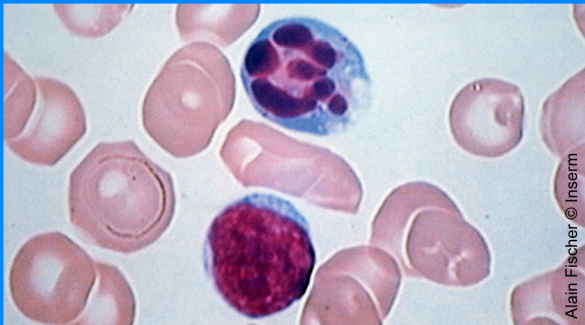




Microscope optique (19^e)

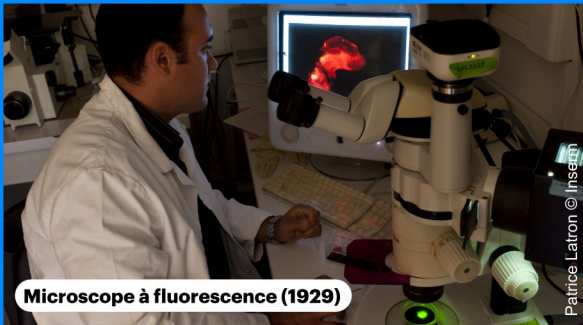
Patrice Latron © Inserm

cartes "Microscopes"



Alain Fischer © Inserm

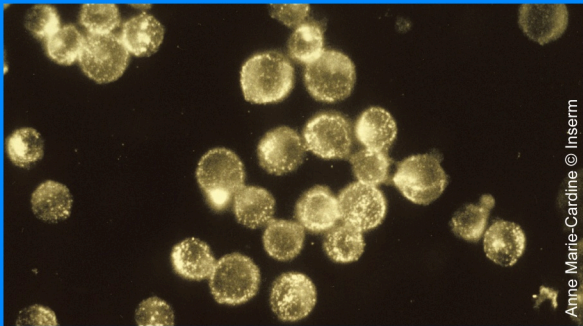
cartes "Microscopes"



Microscope à fluorescence (1929)

Patrice Latron © Inserm

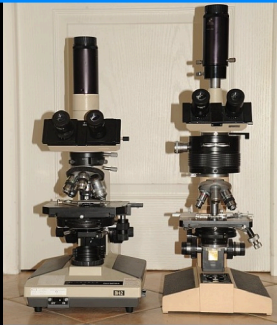
cartes "Microscopes"



Anne Marie-Cardine © Inserm

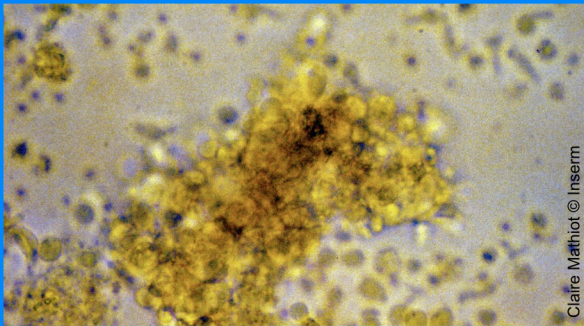
cartes "Microscopes"

**Microscope
à contraste
interférentiel
(1930)**



© Daniel Nardin

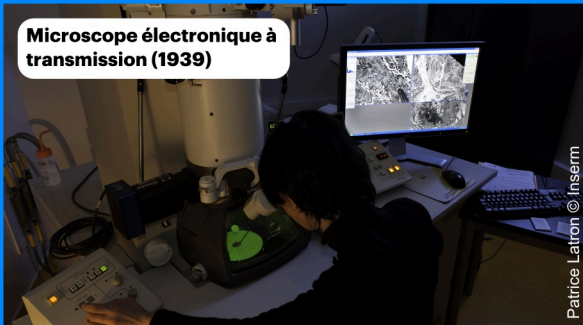
cartes "Microscopes"



Claire Mathiot © Inserm

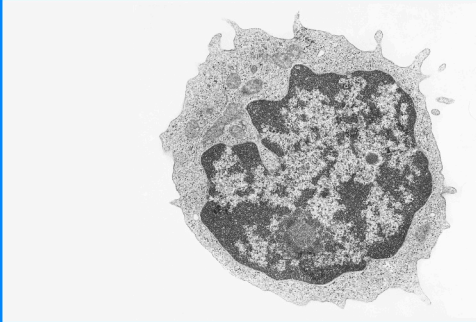
cartes "Microscopes"

**Microscope électronique à
transmission (1939)**



Patrice Latron © Inserm

cartes "Microscopes"



Anne-Marie Cheavance de Boisfleury © Inserm

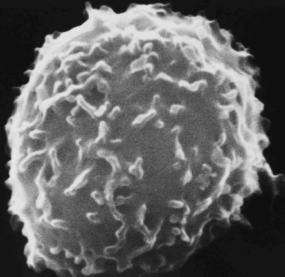
cartes "Microscopes"

Patrice Latron © Inserm



**Microscope électronique
à balayage (images en 3D)
(1965)**

cartes "Microscopes"



Anne-Marie Chevance de Boisfleury © Inserm

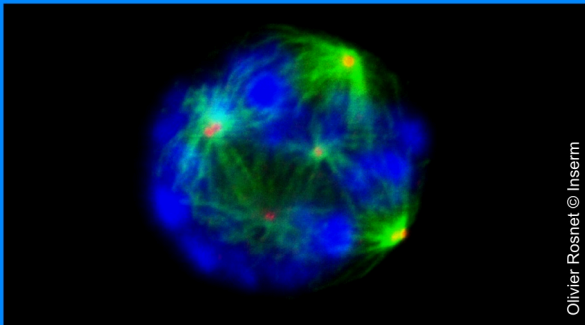
cartes "Microscopes"

**Microscope confocal (à balayage laser
et à marqueurs fluorescents) (1970)**



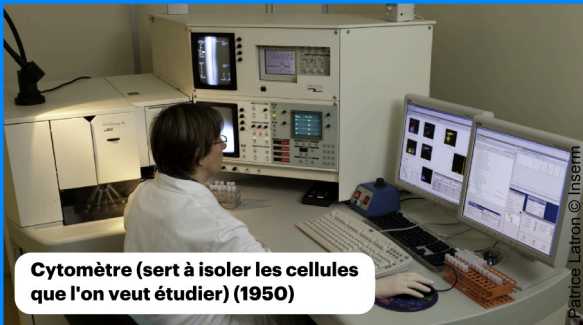
Patrice Latron © Inserm

cartes "Microscopes"



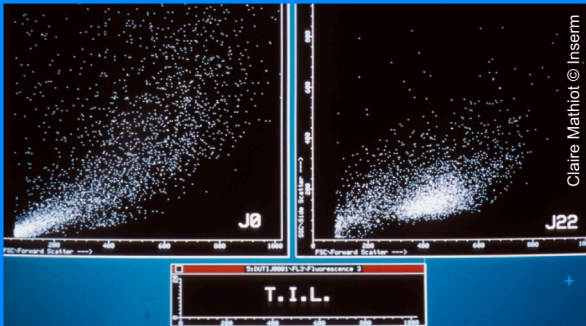
Olivier Rosnet © Inserm

cartes "Microscopes"



Cytomètre (sert à isoler les cellules que l'on veut étudier) (1950)

cartes "Microscopes"



Claire Mathiot © Inserm

cartes "Microscopes"