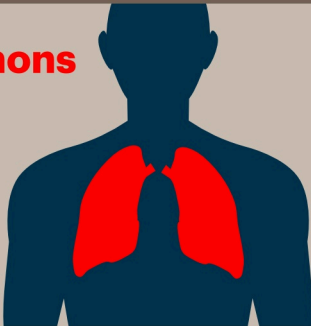
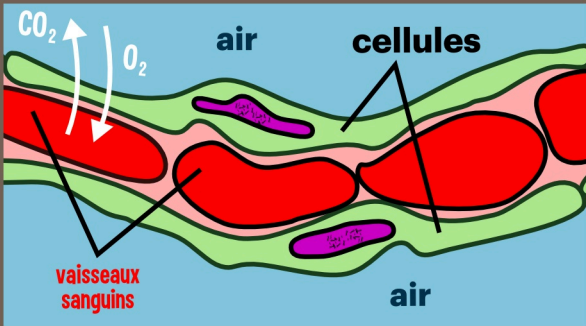


poumons

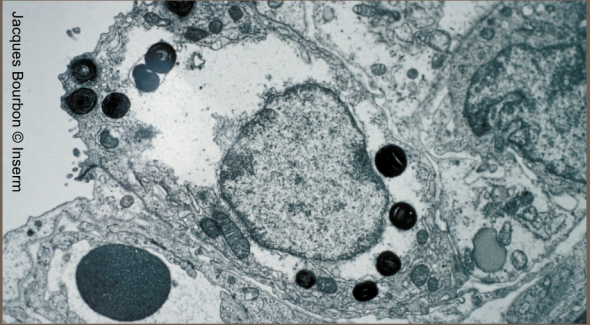


cartes "Organes et cellules"



cartes "Organes et cellules"

Jacques Bourbon © Inserm

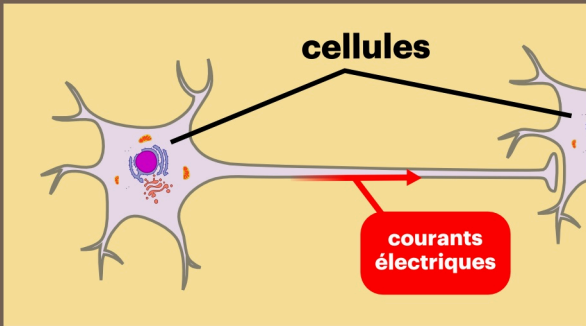


cartes "Organes et cellules"

cerveau



cartes "Organes et cellules"



cartes "Organes et cellules"

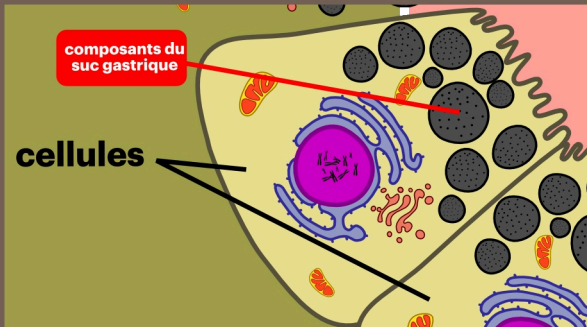


cartes "Organes et cellules"

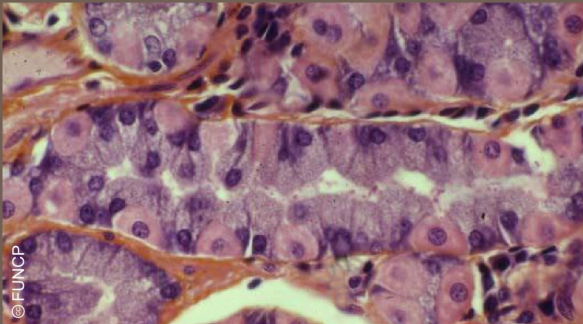
A dark blue silhouette of a human torso is centered within a light gray rectangular frame. The frame is set against a larger brown background. A bright red stomach is depicted within the torso's outline. The word "estomac" is written in red, bold, sans-serif font across the upper part of the stomach.

estomac

cartes "Organes et cellules"



cartes "Organes et cellules"



© FUNCP

cartes "Organes et cellules"



reins

A stylized diagram of a human torso from the waist up, rendered in dark blue. The torso is centered within a light beige rectangular frame. The word "reins" is written in bold red text above two red kidney icons. The kidneys are depicted as red bean-shaped organs with a small tube extending downwards from each. The entire diagram is enclosed in a thick brown border.

cartes "Organes et cellules"

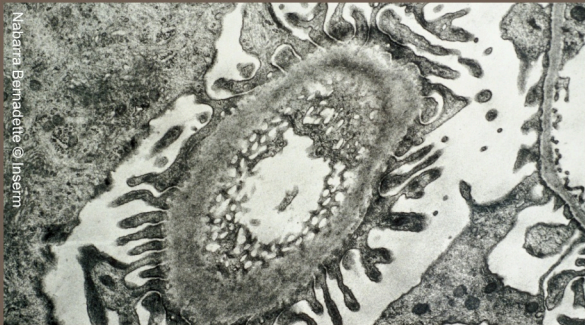


urine

cellules

vaisseaux sanguins

cartes "Organes et cellules"



Nabarra Bernadette © Inserm

cartes "Organes et cellules"

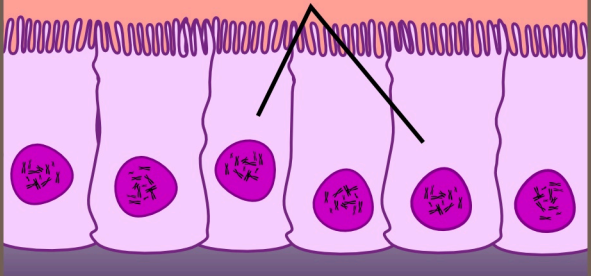


intestin

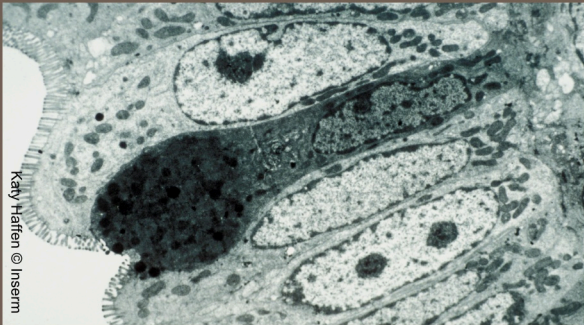
A stylized illustration of a human torso from the waist up, rendered in dark blue. The torso is centered against a light beige background. The word "intestin" is written in bold red text across the upper abdomen. Below the text, a red, coiled shape represents the intestines. The entire illustration is framed by a dark brown border.

cartes "Organes et cellules"

cellules



cartes "Organes et cellules"



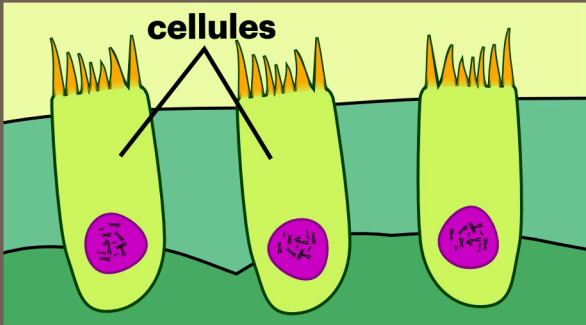
Katy Hafften © Inserm

cartes "Organes et cellules"

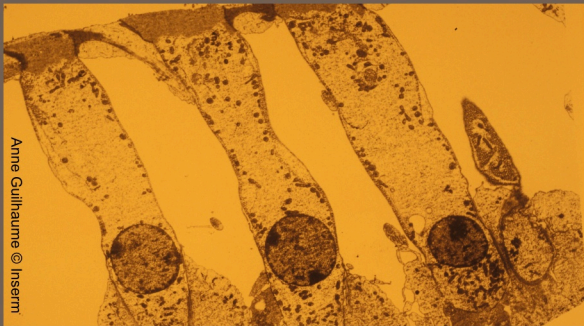


oreille

cartes "Organes et cellules"



cartes "Organes et cellules"



Anne Guillaume © Inserm

cartes "Organes et cellules"