



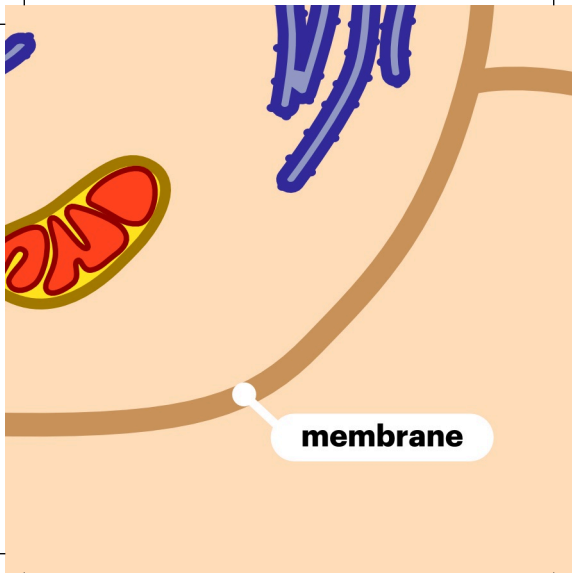
A diagram of a cell with a light orange background. A brown line representing a cell membrane or organelle runs diagonally from the top left to the bottom right. In the upper right area, there is a mitochondrion with a yellow outer membrane and red inner folds (cristae). A white line points from a label to the center of this mitochondrion. Another mitochondrion is partially visible on the left side. A small blue and purple structure is in the top right corner.

mitochondrie

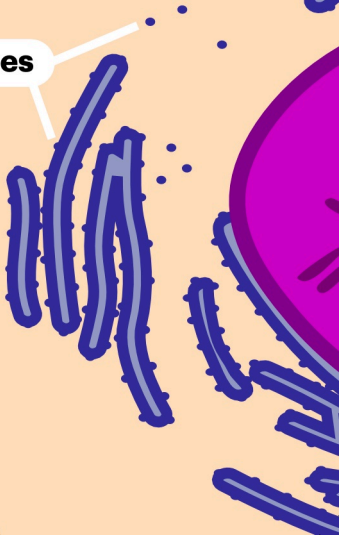


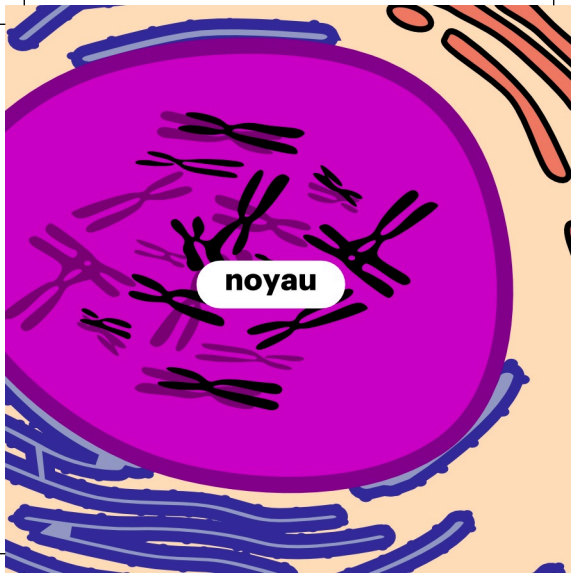
**réticulum
endoplasmique rugueux**

The diagram illustrates the internal structure of a cell. The rough endoplasmic reticulum is depicted as several blue, elongated, and slightly curved structures with a textured surface, located in the upper portion of the cell. A white line with a circular endpoint points from a text label to one of these structures. The cytoplasm is represented by a light orange background. A horizontal brown line, likely representing the cell membrane, runs across the middle of the cell. Two mitochondria are shown: one in the lower-left corner and another partially visible on the right edge. Both mitochondria have a yellow outer membrane and a red inner membrane with visible folds (cristae).



ribosomes

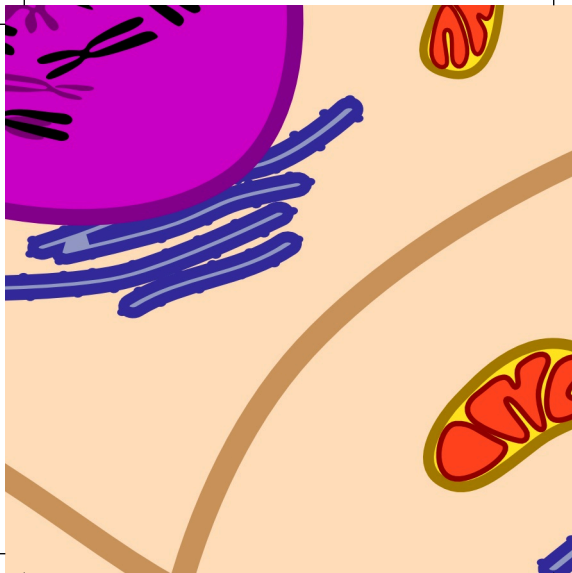


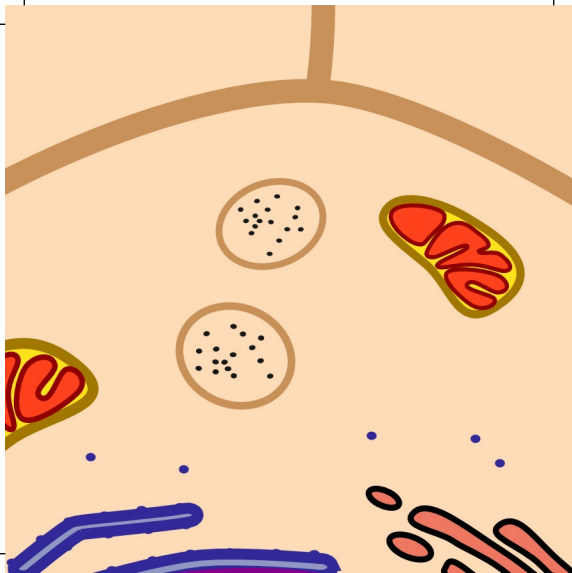




The diagram illustrates a portion of a cell. On the left, there are several red, oval-shaped structures representing mitochondria. In the center, a white callout bubble with a black border contains the text 'appareil de Golgi'. A white line extends from this bubble to a specific red oval. To the right of the Golgi apparatus, there are three small blue dots. At the bottom, there are several blue, elongated structures with small dots on their surface, likely representing the endoplasmic reticulum. A thick brown line runs vertically on the right side of the diagram.

appareil de Golgi







A diagram of a cell with an orange background. A thick brown line represents the cell membrane, curving from the top left to the bottom right. Two circular organelles, each with a brown border and black dots inside, are located in the upper right. A small blue dot is in the lower left. A label 'cytoplasme' is in a white rounded rectangle on the left.

cytoplasme