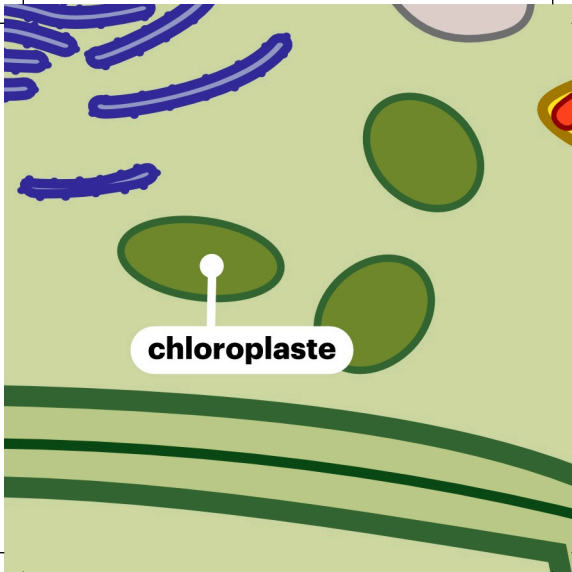


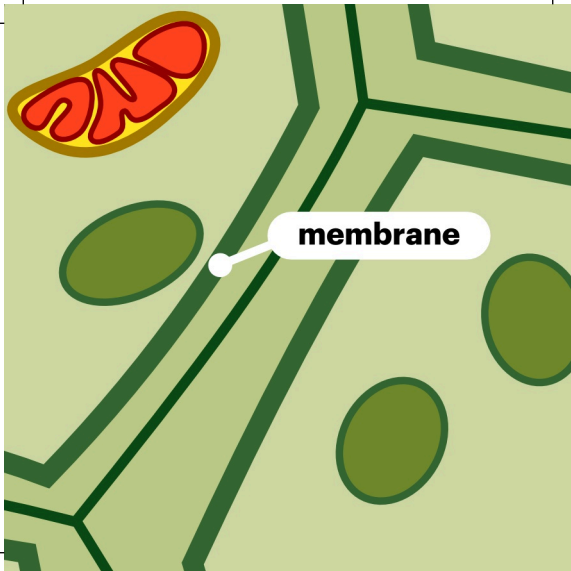


**réticulum
endoplasmique rugueux**

The diagram illustrates the internal structure of a cell. The background is a light green color. Several dark green, wavy lines represent the rough endoplasmic reticulum. In the upper right corner, there are blue, wavy lines representing the smooth endoplasmic reticulum. A white line with a circular end points from the text label to the blue structure. There are also two green circular structures, possibly representing mitochondria or other organelles, one on the left and one in the center-right.



chloroplaste

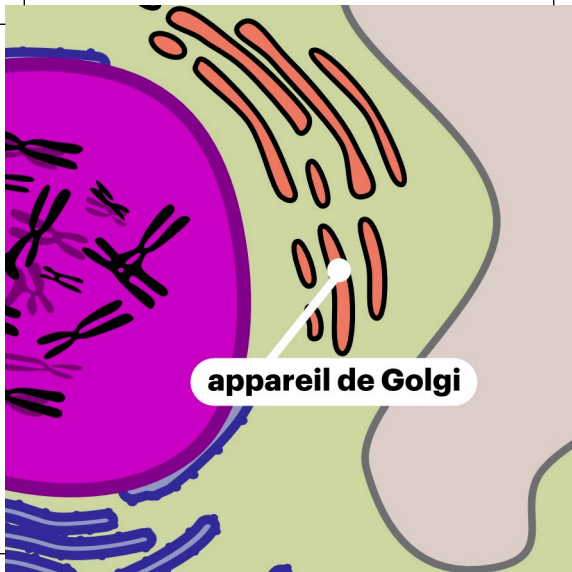




A diagram of a cell. On the right is a large, magenta-colored nucleus containing several black, X-shaped chromosomes. A label 'noyau' is inside the nucleus. To the left of the nucleus is the light green cytoplasm, which contains several blue, elongated, bumpy structures representing mitochondria. Small blue dots representing ribosomes are scattered in the cytoplasm. A label 'ribosomes' is in the upper left, with two white lines pointing to two of the blue dots. The background on the left has dark green, wavy lines.

ribosomes

noyau



appareil de Golgi



A diagram of a plant cell. The cell is filled with a light green fluid. On the left, a large, light pink, irregularly shaped vacuole is shown. A white line with a dot at the end points from the word 'vacuole' to the vacuole. In the center, three dark green, vertical, parallel lines represent chloroplasts. On the right, there is a dark green oval. In the top right and bottom left corners, there are small, semi-circular structures with red and yellow segments, representing parts of the cell wall or other organelles.

vacuole



mitochondrie



cytoplasme



**paroi
pectocellulosique**

The diagram illustrates the structure of plant cell walls. It features several green, oval-shaped chloroplasts at the top. The central part of the image shows multiple layers of cell walls, represented by dark green lines forming a V-shape. A white callout bubble points to one of these layers, containing the text 'paroi pectocellulosique'. In the bottom right corner, a portion of a red, wavy structure, likely a mitochondrion, is visible. The background is a light green color.